



Partner Webinar Coronavirus

December 3, 2020

Agenda

- Opening Remarks
 - **Thomas L. M. Pangburn, MD** // Chief Clinical Officer
 - **Heather Norman** // Chief Nursing Officer
- COVID-19 The New Paradigm
 - **Dr. Bill Ruby** // Associate Chief Clinical Officer
- COVID-19: Vaccination
 - **Karina Purcell** // VP Nursing Initiatives
- Q/A



COVID-19: The New Paradigm

Dr. Bill Ruby // Associate Chief Clinical Officer

A number is just a number...

NATIONWIDE COVID-19 METRICS. 7-DAY AVERAGE LINES

Apr 1 - Dec 2

Daily Tests

Dec 2: 1,444,783

7-Day Avg: 1,529,817

Daily Cases

Dec 2: 195,695 ●

7-Day Avg: 161,070

Currently Hospitalized

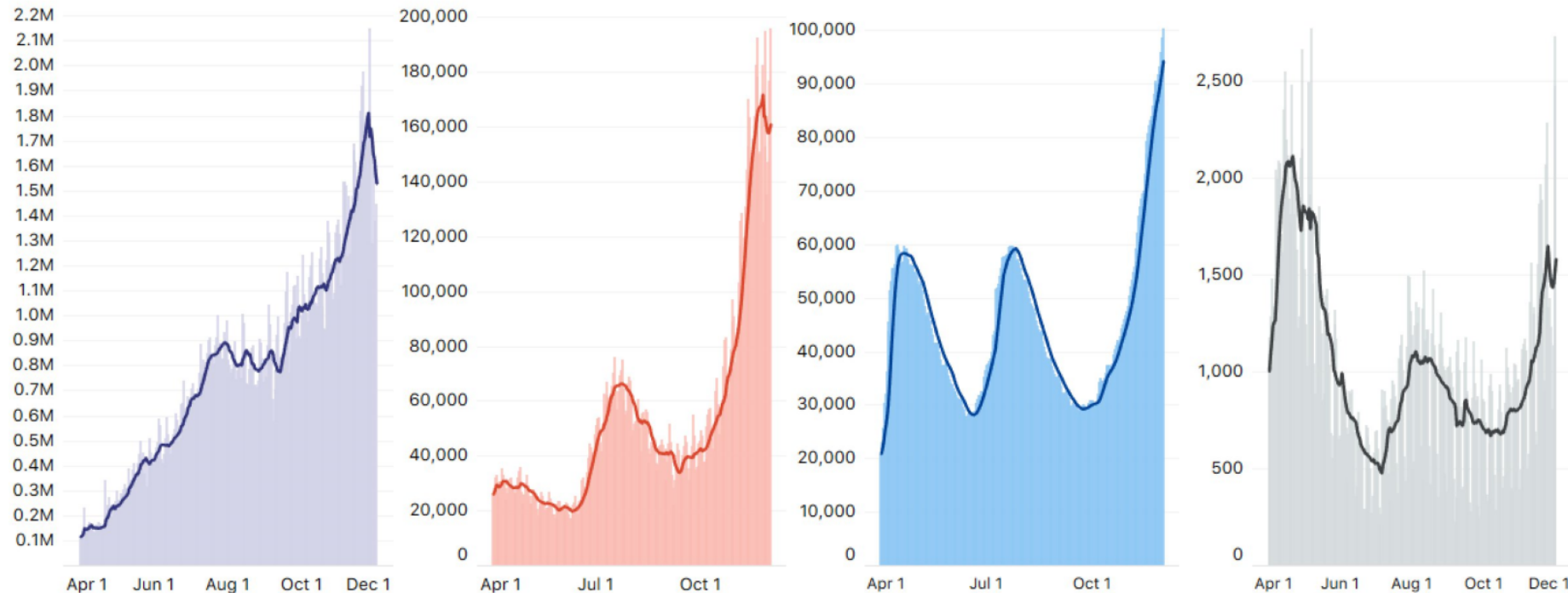
Dec 2: 100,226 ●

7-Day Avg: 94,314

Daily Deaths

Dec 2: 2,733

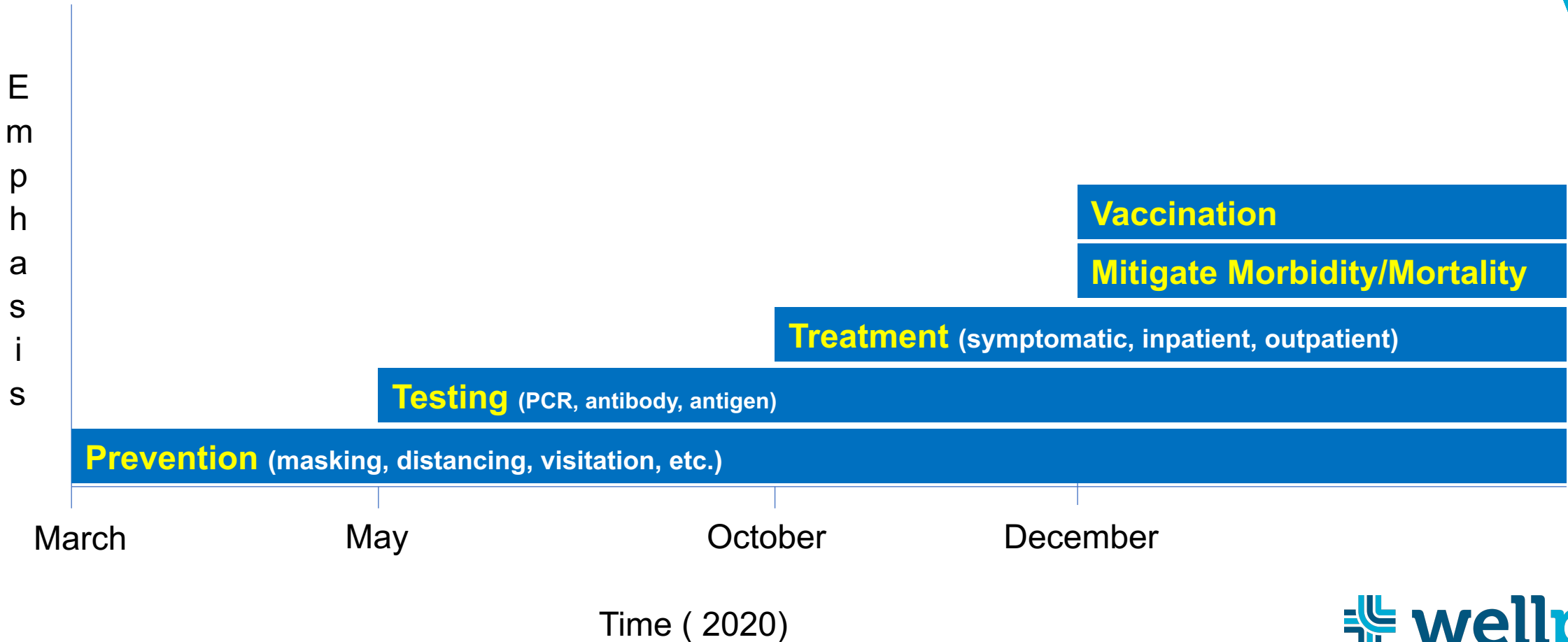
7-Day Avg: 1,584



Source: The COVID Tracking Project

● Single-day record

Paradigm Shift...

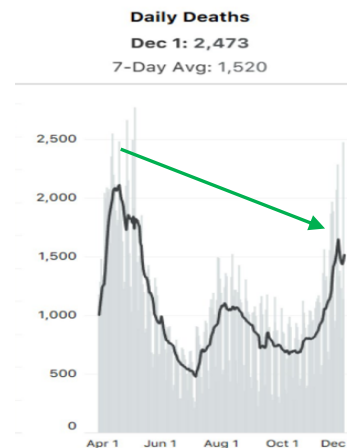


Treatment Update

- Remdesivir
 - EUA October 22, 2020
 - Inpatient use
 - Severe disease
- Bamlanivimab
 - EUA November 9, 2020
 - Outpatient use (IV)
 - Mild to Moderate disease
- Casirivimab and imdevimab
 - EUA November 21, 2020
 - Outpatient use (IV)
 - Mild to Moderate disease

Total Monoclonal Antibody Therapeutics Allocated to Date

Product	Total Allocation (patient courses)
Bamlanivimab	215,540
Casirivimab/imdevimab	62,512
Total Allocations	278,052



Best Practices for Outpatient Management

- Be prepared for COVID-19 Outbreaks (can go from 0 – 300 cases in just a few days)
 - Review pandemic response plans
 - Maximize Telehealth opportunities
- Know what to do when the majority of your ADP is positive
 - Housing plans
 - 10-day isolation for positive patients (24 hours no fever/improved signs and symptoms)
- Risk Stratify Patients
 - Place most vulnerable patients together (resource efficiency)
- Maximize Communication/Partnership with:
 - EMS
 - Local Hospitals
 - Local Dept. of Health (Federal, State jurisdictions)



COVID-19: Vaccination

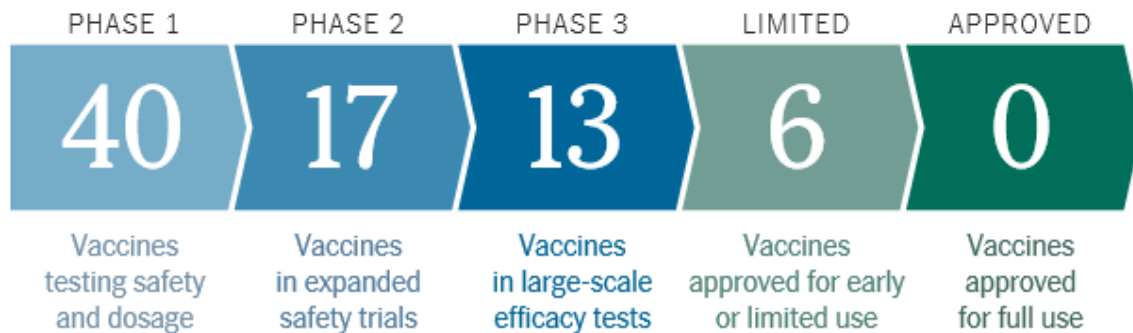
Dr. Bill Ruby // Associate Chief Clinical Officer

Where are we?

Coronavirus Vaccine Tracker

By Carl Zimmer, Jonathan Corum and Sui-Lee Wee Updated November 30, 2020

WORLD COUNTRIES ▾ | U.S.A. STATES ▾ COLLEGES



PHASE 2 PHASE 3 COMBINED PHASES

1   

Pfizer

- 95% effective
- No serious side effects
- Nov. 20 NDA for EUA filed
- Deep Freeze storage
- 2 doses

2   National Institutes of Health
Turning Discovery Into Health

Moderna

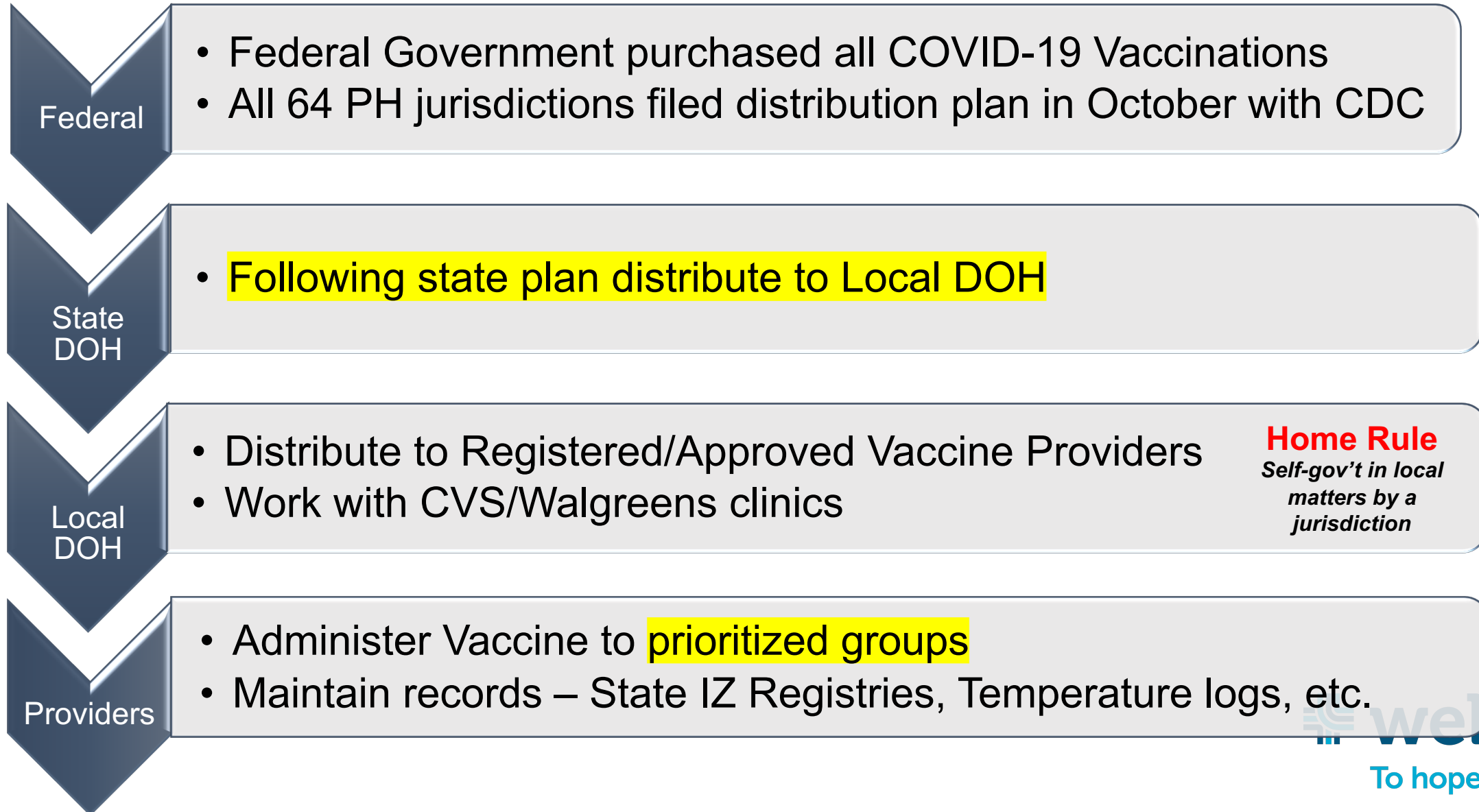
- 94% effective
- No serious side effects
- Nov. 30 NDA for EUA filed
- NO Deep Freeze storage required
- 2 doses

 **wellpath**[®]
To hope and healing.

mRNA Vaccines: FDA/EUA Pending

Manufacturer	Requires Deep Freeze	Once thawed how long before it MUST be administered?	Requires Diluent	How long after dilution must it be discarded?	Days Until Second Dose	Transported
Pfizer	Yes	Up to 5 days (undiluted and under refrigeration)	Yes	Discard 6 hours after dilution when stored at 2°C to 25°C (35° to 77°F)	21 days	Pfizer thermal shippers, dry ice for up to 10 days of storage
Moderna	No	12 hours at room temperature	No	N/A	28 days	-20°C (-4°F), equal to most home freezers

COVID-19 Vaccination Process



Proposed Interim Phase 1 Sequence

	Phase 1c Adults with high-risk medical conditions (> 100 million) Adults 65+ (53 million)	
	Phase 1b Essential workers (87 million) (examples: Education Sector, Food & Agriculture, Utilities, Police, Firefighters, Corrections Officers, Transportation)	
Phase 1a HCP (21 million) LTCF residents		

Time

3 Principles

1. Maximize benefits and minimize harms
2. Promote Justice
3. Mitigate Health Inequities



Thank you.